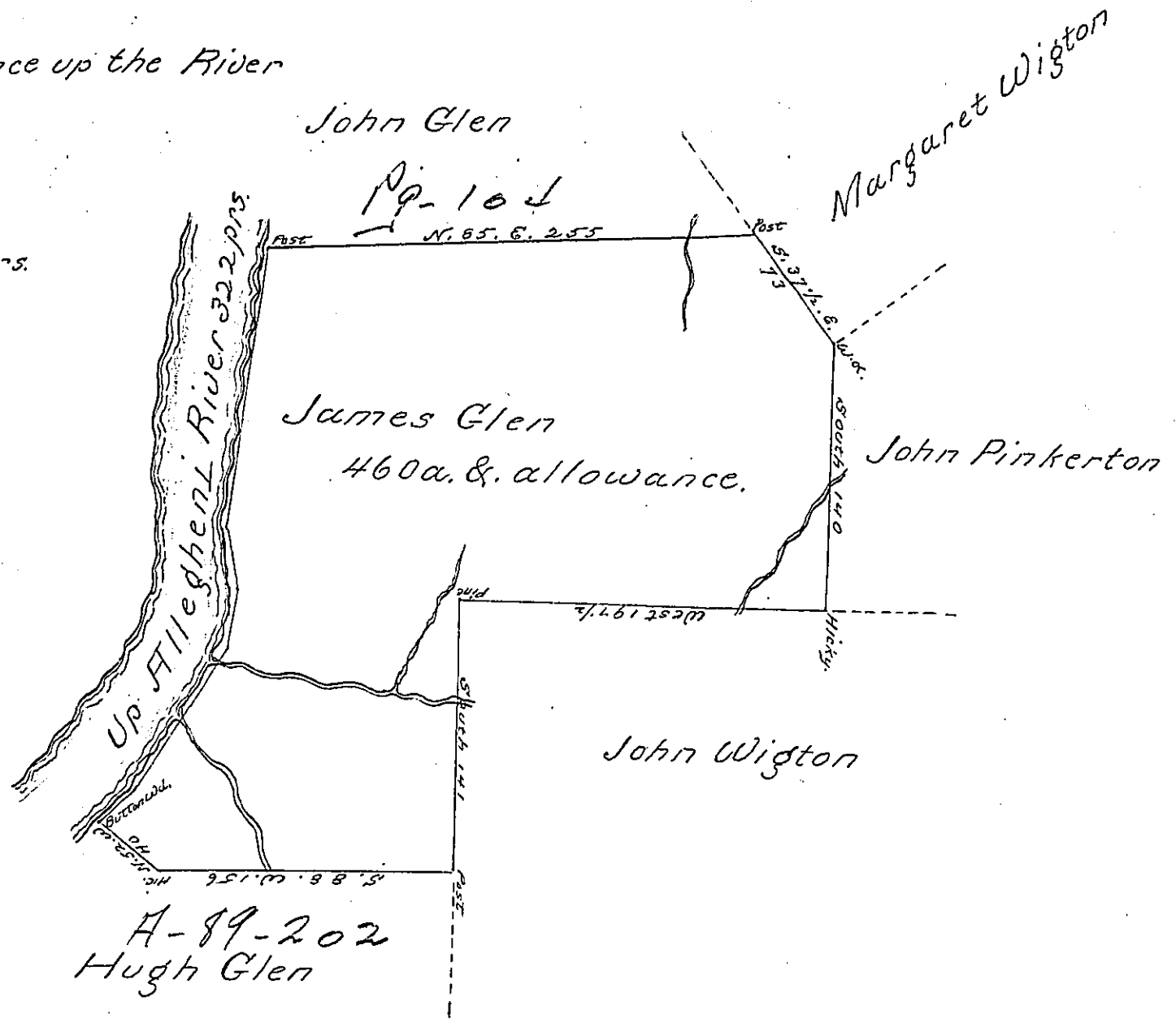


Course & Distance up the River

N. 48. E. 22
N. 34. E. 91
N. 11. E. 29
N. 8. W. 32
N. 7. E. 148
in all 322 p^{rs}.



Survey'd to James Glen on the 13th December 1787 the above Described Tract of Four hundred & sixty acres and allowance of six p^{er} cent. Situate on a large Run emptying into the Allegheny River, in Westmoreland County By warrant of the 9th Day of June 1786.

Joshua Elder D. S.

N. B. The warrant on which this was survey'd was intended for land on a Run emptying into the south side of Kawanohancock but was survey'd on earlier Warrants

J. Elder D. S.

John Lukens Esqr. S. Genl.

IN TESTIMONY that the above is a copy of the original remaining on file in the Department of Internal Affairs of Pennsylvania, made conformably to an Act of Assembly approved the 16th day of February, 1833, I have hereunto set my Hand and caused the Seal of said Department to be affixed at Harrisburg, this fourth day of September 1900

James W. Latta
Secretary of Internal Affairs.